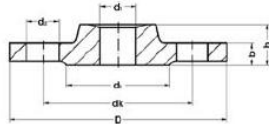


7552

Lötflansch PN16



• Rotguss oder Siliziumbronze



| Code | CHF | NPK | SP | GP | Gewicht [kg] |
|-------------|-----|----------|----|----|--------------|
| 767 552 008 | | 23 53 06 | 1 | 40 | 0.710 |
| 767 552 009 | | 23 53 07 | 1 | 24 | 0.960 |
| 767 552 010 | | 23 53 08 | 1 | 20 | 1.180 |
| 767 552 011 | | 23 54 01 | 1 | 14 | 1.480 |
| 767 552 012 | | 23 54 02 | 1 | 12 | 1.575 |
| 767 552 013 | | 23 54 03 | 1 | 7 | 2.360 |
| 767 552 014 | | 23 54 04 | 1 | 6 | 2.450 |
| 767 552 015 | | | 1 | 10 | 2.585 |
| 767 552 016 | | | 1 | 6 | 2.670 |

| k [mm] | H [mm] | b [mm] | M | DN [mm] | lo [mm] | a [mm] |
|--------|--------|--------|--------|---------|---------|--------|
| 65 | 18 | 12 | M12x45 | 15 | 4 | 95 |
| 75 | 23 | 14 | M12x45 | 20 | 4 | 105 |
| 85 | 25 | 14 | M12x45 | 25 | 4 | 115 |
| 100 | 30 | 18 | M12x45 | 32 | 4 | 140 |
| 110 | 34 | 18 | M16x50 | 40 | 4 | 150 |
| 125 | 38 | 18 | M16x50 | 50 | 4 | 165 |
| 145 | 40 | 18 | M16x50 | 65 | 4 | 185 |
| 160 | 48 | 18 | M16x60 | 80 | 8 | 200 |
| 180 | 58 | 18 | M16x60 | 100 | 8 | 220 |

PF 1 12 092 600