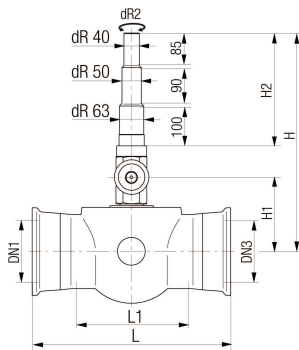




Universal 1 mit Steckmuffen, Abgang Universal PE-Enden, Fig. 5490



Gehäuse aus duktilem Gusseisen, Vollschutz Epoxy.



| Lief.-Nr. | DN1/DN3 mm | d mm | PN bar | L mm | H mm | NPK | Art.-Nr. |
|-----------|---------------|----------|-----------|---------|---------|---------|------------|
| 185070 | 100 | 63/50/40 | 16 | 427 | 562 | 824.112 | 33201-0214 |
| 185071 | 125 | 63/50/40 | 16 | 433 | 572 | 824.113 | 33201-0215 |
| 185072 | 150 | 63/50/40 | 16 | 436 | 582 | 824.114 | 33201-0216 |
| 185073 | 200 | 63/50/40 | 16 | 440 | 607 | 824.115 | 33201-0217 |

2520